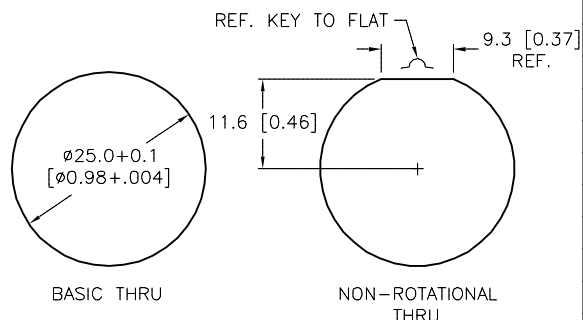
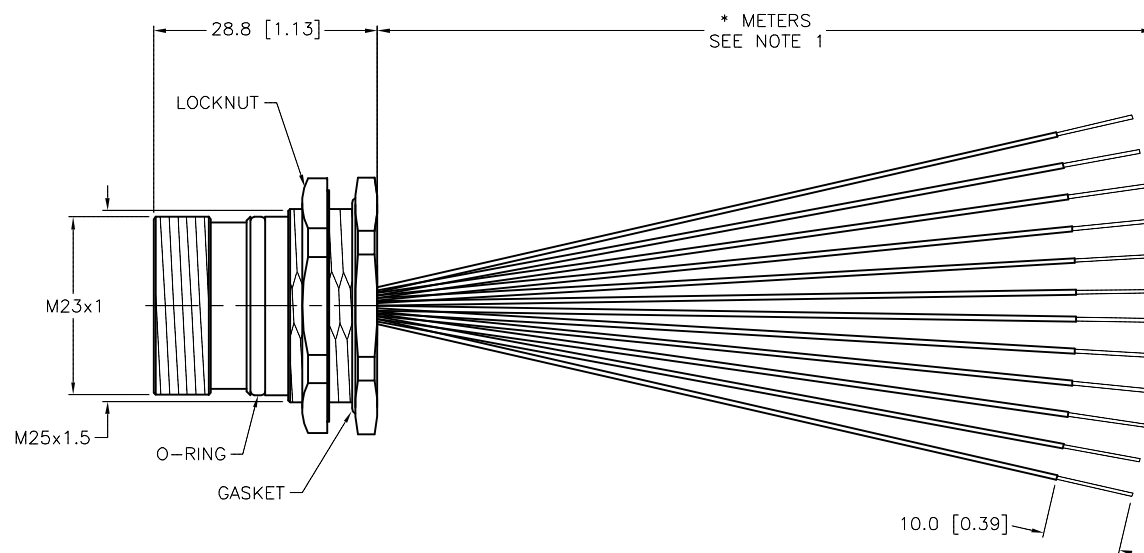
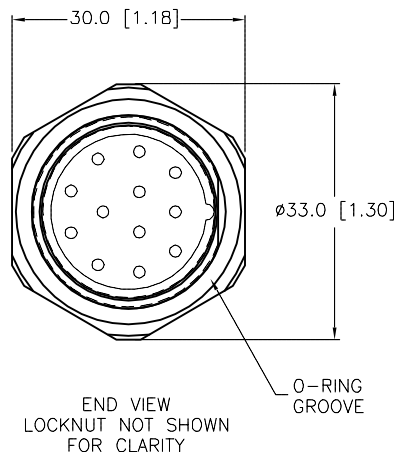


- 1 = BROWN  
2 = ORANGE  
3 = BLUE  
4 = WHITE  
5 = GREEN  
6 = YELLOW  
7 = GRAY  
8 = PINK  
9 = RED  
10 = BLACK  
11 = VIOLET  
12 = GREEN/YELLOW



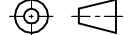
SPECIFICATIONS	
CONTACT CARRIER MATERIAL/COLOR	NYLON PBT/GRAY
CONTACT MATERIAL/PLATING	BRASS/GOLD
CONNECTOR HOUSING MATERIAL/PLATING	BRASS/NICKEL
O-RING/GASKET MATERIAL	RUBBER (NITRILE OR FPM)
RATED CURRENT [A]	6.0 A MAX.
RATED VOLTAGE [V]	300 V
NUMBER OF CONDUCTORS (AWG)	12x18 AWG
PROTECTION CLASS	MEETS IEC IP67
TEMPERATURE RANGE	-40°C TO +105°C (-40°F TO +221°F)
MAXIMUM PANEL THICKNESS	6.5 [0.256]



<b>CABLE LENGTH</b>	<b>TOLERANCE*</b>
ALL LENGTHS	+ 4% (OR 50mm) OF LENGTH - 0% (OR 0mm) OF LENGTH WHICHEVER IS GREATER
<b>STRIP LENGTH</b>	<b>TOLERANCE*</b>
0-7mm	±0.5mm
8-29mm	±1.0mm
30-49mm	±2.0mm
50-69mm	±3.0mm
70-100mm	±4.0mm
OVER 100mm	±5.0mm
<b>* UNLESS OTHERWISE SPECIFIED</b>	

1. "\*" INDICATES LEAD LENGTH IN METERS. CONTACT TURCK TO ORDER SPECIFIC LENGTHS.

SOURCE DRAWING - FOR REFERENCE ONLY

RELATED DOCUMENTS  1.  2.  3.  4.	3RD ANGLE PROJECTION	THIS DRAWING IS CONFIDENTIAL AND THE PROPERTY OF TURCK INC. USE OF THIS DOCUMENT WITHOUT WRITTEN PERMISSION IS PROHIBITED.		<div>TURCK</div> <div>3000 CAMPUS DRIVE MINNEAPOLIS, MN 55441 1-800-544-7769 (763) 553-7300 (763) 553-0708 fax www.turck.us</div>				
								
	MATERIAL					DRFT JBJ	DATE 06/19/02	DESCRIPTION  CSFD 12-12-*
	SEE SPECIFICATIONS					APVD	SCALE 1=1.0	
FINISH	ALL DIMENSIONS DISPLAYED ON THIS DRAWING ARE FOR REFERENCE ONLY  CONTACT TURCK FOR MORE INFORMATION	UNIT OF MEASUREMENT  MILLIMETER [ INCH ]  DO NOT SCALE THIS DRAWING		IDENTIFICATION NO.		REV		
SEE SPECIFICATIONS				FILE: 777001135		SHEET 1 OF		